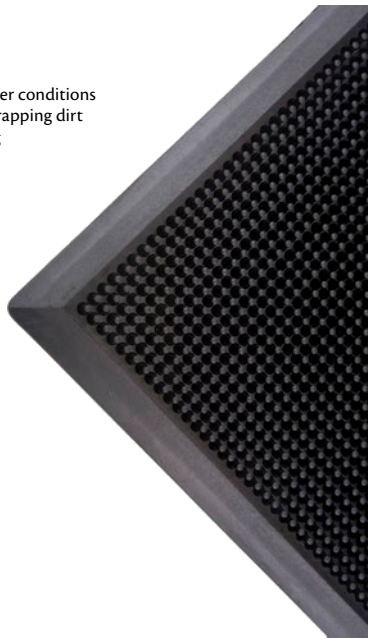


SCRAPER MAT

- Scrape shoes and boots clean to avoid tracking dirt, slush, and snow
- Durable rubber mat resists harsh weather conditions
- Numerous rubber fingers are ideal for trapping dirt
- Beveled edging to help prevent tripping
- Easy to clean
- Surface Pattern: Textured
- 1/2" thick
- Colour: Black



Model No.	Dim.			Price /Each
	W"	x	L"	
SFQ527	24	x	32	
SFQ528	32	x	39	
SFQ529	28	x	46	
SFQ530	36	x	60	
SFQ531	36	x	72	

SCRAPER MATS LOW PROFILE

- Scrapes shoes and boots clean to avoid tracking dirt, slush, and snow
- Durable rubber mat resists harsh weather conditions
- Low profile design, 5/16" thick
- Easy to clean
- 3' W x 5' L
- Available with slots to facilitate drainage
- Colour: Black

SDL872

SDL871



Model No.	Description	Price /Each
SDL871	Solid	
SDL872	Slotted	

SUPERSCRAPETM NO. 555 MATS

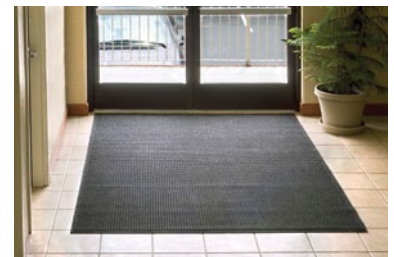
- Ideal for removing dirt and adding slip resistance
- 100% nitrile rubber construction is ideal for kitchens, locker rooms, slippery inclines, restaurants and more
- Low profile
- Highly durable for years of use
- 3/16" thick
- Colour: Black



Model No.	Dimensions			Price /Each
	W'	x	L'	
JA680	2.5	x	3	
JA681	3	x	5	
JA682	3	x	10	
JA683	4	x	6	

WIPER/SCRAPERS - WATERHOG® FASHION

- Unique ridged construction effectively removes and traps dirt and moisture
- Exclusive rubber-reinforced face nubs prevent pile from crushing, extending product life
- Anti-static 100% premium PET fibre system
- Highly durable, makes it the perfect choice for indoor or outdoor applications
- Gripper rubber backing minimizes movement
- Exclusive "water dam" traps dirt and water so they stay in the mat and off of your floor-minimizing slip hazards and floor damage around the perimeter of the mat
- Attractive fabric border
- Fabric dries quickly; will not fade or rot
- Can easily be vacuumed or hosed off
- 3/8" thick
- Other sizes and colours available



Model No.		Dimensions			Price /Each
Charcoal	Grey	W'	x	L'	
JA154	JA159	3	x	5	
JA155	JA160	3	x	10	
JA156	JA161	4	x	6	
JA157	JA162	4	x	10	
JA158	JA163	6	x	12	